

A Psalm for the Resurrection of Our Lord

Psalm 118

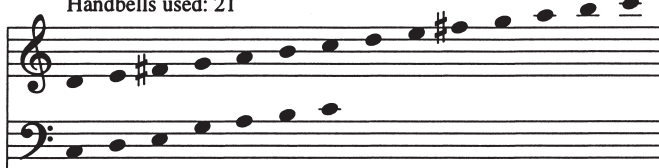
SATB, 3 Octave Handbells

Psalm 118:1-2, 15-24 (NIV)

Choral setting by KENNETH T. KOSCHE

Handbell parts by JOHN A. BEHNKE

3 octaves
Handbells used: 21



Antiphon: Psalm 118:1

Handbells

1 LV 2 LV R 3

f

S A

T B

f

Give thanks to the Lord, for

Musical score for the Antiphon: Psalm 118:1. It features three systems of staves. The first system is for Handbells, with three parts (1, 2, 3) and dynamic markings (f). The second system is for SATB voices, with Soprano (S), Alto (A), Tenor (T), and Bass (B) parts. The third system is for Handbells, with three parts (4, 5, 6) and dynamic markings (f). The lyrics "Give thanks to the Lord, for" are written below the SATB parts.

4 5 6

he is good; his love en - dures for - ev - er."

Musical score for the main text of Psalm 118:1. It features three systems of staves. The first system is for Handbells, with three parts (4, 5, 6) and dynamic markings (f). The second system is for SATB voices, with Soprano (S), Alto (A), Tenor (T), and Bass (B) parts. The third system is for Handbells, with three parts (4, 5, 6) and dynamic markings (f). The lyrics "he is good; his love en - dures for - ev - er." are written below the SATB parts.

Text taken from the HOLY BIBLE, NEW INTERNATIONAL VERSION®. NIV® Copyright © 1973, 1978, 1984 by International Bible Society. Used by permission. All rights reserved.

Copying or reproducing this material in any form is illegal.

Copyright © 1998 Concordia Publishing House

3558 S. Jefferson Avenue, St. Louis, MO 63118-3968

All Rights Reserved

Printed in U.S.A.

A Psalm for the Ascension of Our Lord

Psalm 110

SATB, 3 Octave Handbells

Psalm 110 (NIV)

Choral setting by KENNETH T. KOSCHE
Handbell parts by JOHN A. BEHNKE

3 octaves
Handbells used: 22

Handbell introduction for Psalm 110, 3 octaves. The music is written for two staves (treble and bass) in 4/4 time. It begins with a treble clef and a key signature of one flat (B-flat). The melody starts on a middle C (C4) and ascends stepwise to a B-flat (Bb4), then descends to a G (G4) and ends on an F (F4). The bass line starts on a G (G3) and ascends stepwise to a B-flat (Bb3), then descends to a G (G3) and ends on an F (F3).

Antiphon: Psalm 110:1a

Antiphon: Psalm 110:1a. The music is written for Handbells, Soprano (S), Alto (A), Tenor (T), and Bass (B) in 4/4 time. The key signature is one flat (B-flat). The Handbells part begins with a treble clef and a key signature of one flat. It features three measures of music, each marked with a 'Sk' (Soprano) and a 'Sk' (Alto). The first measure is marked *mp* (mezzo-piano) and the second and third measures are marked *f* (forte). The Soprano and Alto parts enter in the third measure, marked *mf* (mezzo-forte). The lyrics are: "The Lord says to my".

Continuation of Antiphon: Psalm 110:1a. The music is written for Handbells, Soprano (S), Alto (A), Tenor (T), and Bass (B) in 4/4 time. The key signature is one flat (B-flat). The Handbells part begins with a treble clef and a key signature of one flat. It features three measures of music, each marked with a '4', '5', and '6'. The first measure is marked *mf* (mezzo-forte) and the second and third measures are marked *mf* (mezzo-forte). The Soprano and Alto parts enter in the third measure, marked *mf* (mezzo-forte). The lyrics are: "Lord: 'Sit at my right hand.'"

A Psalm for the Festival of Pentecost

Psalm 143

SATB, 3 Octave Handbells

Psalm 143 (NIV)

Choral setting by KENNETH T. KOSCHE
Handbell parts by JOHN A. BEHNKE

3 octaves
Handbells used: 27

Antiphon: Psalm 143:10 alt.

Handbells

1 *mp* 2 *f* 3 *mp*

S A *mf*

T B *mf*

Teach me to do your will, for you are my God; may your good

Teach me to do your will, O my God; may your

4 5 6 *f*

ground.

Spir - it lead me, lead me on lev - el, lev - el ground.
Spir - it — lead me, lead me on lev - el — ground.

Spir - it lead me on lev - el ground.